









LIVING WALL

Warm up your outdoor oasis, add a living wall. To get started, make your cuts according to the cutlist provided here

What you'll need:

	Dremel SM20 Saw-Max™		Dremel SM500 3" Wood & Plastic Carbide Wheel		SM840 Saw-Max™ Miter Guide
	SM840 Saw-Max™ Miter Guide		NEW! 4200 High-Performance Rotary Tool		150 1/8" Drill Bit

Other Supplies:

- 1/2 Plywood Sheet 24"W x 36" H
- Five 8' lengths of 1"x4" Cedar Planks
- Two 8' lengths of 1"x2" Cedar Planks
- Seven 8' lengths of 1"x6" Cedar Planks
- Hammer and Finishing Nails
- Drill Driver and Wood Screws
- Wood Glue
- Potting Soil
- Plants for your Planter Boxes

Step by step direction



Step 1

Start by cutting all of the pieces you'll need to complete your living wall, following the provided cut list. First, measure and mark your lengths of cedar planks. All of these cuts can be made using your Dremel Saw-Max tool equipped with the SM500 Wood & Plastic Wheel.

Secure your material to your work bench, turn on your tool and cut along your marked lines. You'll notice how easy it is to make these one-handed cuts, easily following your marked lines through the notch at the front-end of the tool.

Repeat this step for all of the materials on your cut list keeping them organized in separate piles.



Step 2

Once we cut all of our pieces, we decided to add some finishing touches to our living wall by miter cutting some of the edges.

First, we miter cut the top frame piece of the trellis and planter box supports at a 45° angle. To do this, you will need your Saw-Max tool, a SM600 flush cutting blade and a miter guide. Place the miter guide flush against the cedar plank. Clamp the guide in place. Rest the Saw-Max against the guide as you begin cutting and move the tool smoothly through the material. Cut the opposite end of each support at an opposite 45 degree angle.



Step 3

Before assembling our planter boxes, we also miter cut the front edge of each side panel at a 90° angle to add a finished touch to them. Complete these cuts the same as you did in Step 2.



Step 4

Now it is time to assemble your planter boxes. To do this we ran a bead of wood glue along each of the joints and then secured them with finishing nails.

Repeat this step for all of your planter boxes.



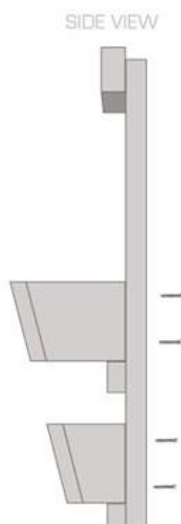
Step 5

To assemble your trellis, first lay out all of the pieces front side down as shown on the provided blue print and mark your pre drill locations for each piece.

We used the NEW Dremel 4200 tool to pre-drill our holes, through which you'll screw each trellis piece into place.

Secure your first trellis piece to your workbench and you are ready to pre-drill pilot holes. Insert a 150 drill bit into your Dremel 4200 tool. Set the tool to high speed and plunge into each mark.

After you have pre-drilled all of your holes, lay your trellis pieces back out face down again and secure them with a drill driver and wood screws.



Step 6

Finally, secure each of your planter boxes to the trellis just resting on each support.

Pre-drill holes along the backside of your trellis pieces through which you will secure your planter boxes. We used our drill driver and wood screws to complete the assembly.

Now you are ready to secure your living wall into its desired location and plant whatever plants you like in each of your planter boxes.



Step 7

As a optional final finishing touch for our living wall, we added some of our Solar Lanterns that we completed a few projects ago.

Simply add a picture hook to the back of your solar lantern and attach it to your living wall in any location you like.